

Workspace 365 modules



 **Workspace365**

Everything simplified.



Modules based on user needs

The focus has shifted. Over the past years both, the organisations and users' needs have changed. The focus has shifted. IT-centred digital workplaces no longer dominate. Instead, HR leaders and Internal communication departments are shaping the landscape, aiming to make work easier, improving how people communicate and work together, supporting HR tasks and encouraging personal growth. **The Digital Employee Experience (DEX) is key, and the market now prefers intranet functionalities coupled with an exceptional digital workplace.**

Join us in embracing the shift

The Digital Employee Experience (#DEX) is the sum total of the digital interactions within the work environment.

With the rise of remote and hybrid working, the DEX is an integral part of the overall employee experience. A great DEX should never be seen as a 'nice to have'. It's far too important to be dismissed as an optional extra.

Let's be clear: Getting the DEX right is crucial for enhancing workflow and productivity. It improves communication and collaboration, as well as supports HR and self-improvement efforts.

Delivering an outstanding digital experience

Transformation rarely happens overnight. Companies take it step by step, starting with updating their workplace tools. After that, they move on to adopting new work methods. Eventually, they completely revamp their business operations.

Our modules have been developed to facilitate this change and are designed to be flexible in use so that you can always **offer your customers what they need, when they need it.**

Our modules

- Improving workflow and productivity
- Better communication and collaboration
- Enhancing HR and self-development



By 2025, **50% of IT organisations will have established a DEX strategy,** team, and management tool, up from 15% in 2022.

Gartner

Supporting core teams

Our modules have been carefully crafted to ensure optimal efficiency. While our primary goal is to assist end users, we also concentrate on three key teams within an organisation to effectively facilitate the desired change.



HR, People & Culture

- Enhanced onboarding/offboarding
- Improve engagement tools
- Improve collaboration
- Culture promotion
- Autonomous teams



Internal Comms

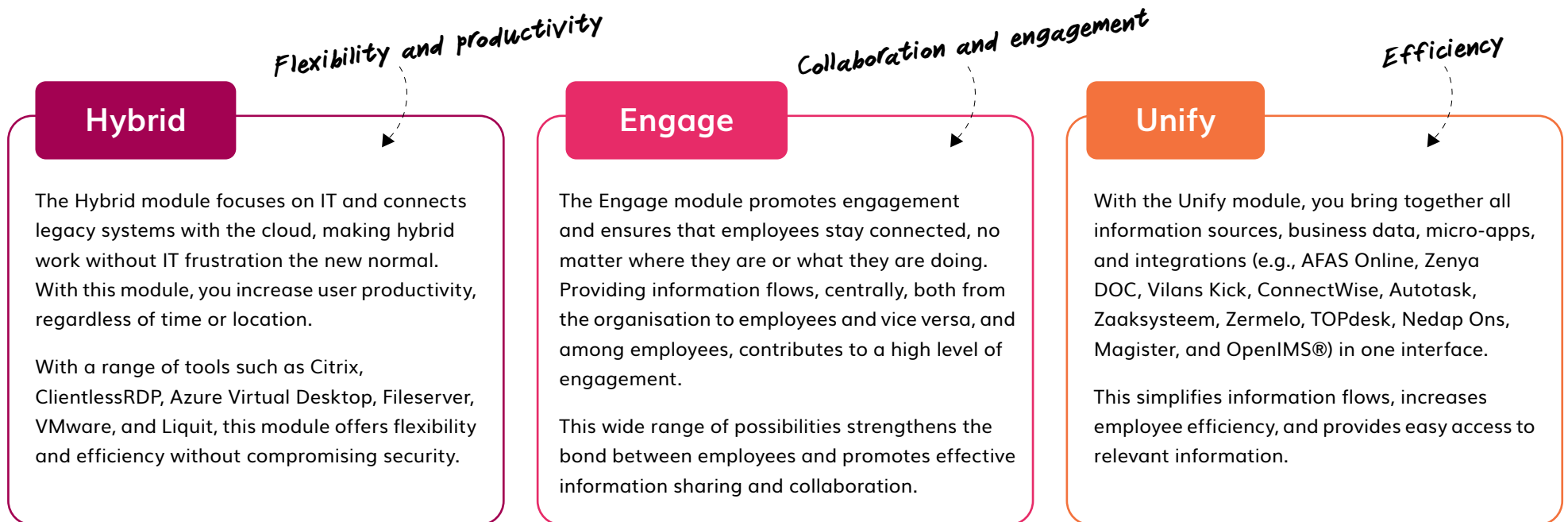
- Unified communication
- Collaboration features
- Role base content targeting



IT & Information Management

- Seamless integration
- Digital transformation
- Improve DEX
- Aggregate data flow from any application
- Improve document management
- Maximise the value of the Microsoft stack

Our modules



Modules that adapt as needs change

Our three modules work alongside ever-present core features. We know the importance of these basics and the benefits they bring. These include:

- Email
- Single Sign-On (SSO)
- Role-based access
- Document app
- Open API
- Multi-device functionality
- Activity Feed

Our three new modules are Hybrid, Engage and Unify

Each module has a different focus and different benefits. At first, it may not be clear which modules best suit your needs. But within the Admin environment, it's easy to toggle modules on or off so that you can determine the best fit.



Modules and features

Workspace 365

- Shortcuts
- Email
- Documents
- Microsoft 365 Apps (Word, Excel, etc.)
- Activity Feed
- Global Search
- Single Sign-On (SSO)
- Mobile app
- Spaces
- Calendar
- How-To
- Azure App
- Multiple branding sets
- Power BI Micro App
- Web Content Micro App
- Announcements API
- Activity Feed API
- Maintenance
- Local apps
- App link
- Audit logging
- Owners (Permissions)
- Conditional Access
- Available User Apps API
- App Icons API
- Integration credentials API
- App requests
- Frequently used tiles
- Embed Tile group
- User provisioning

Hybrid

- Citrix XenApp
- Clientless RDP
- Azure Virtual Desktop
- Fileserver (WebDAV) + Editors
- VMware Horizon
- Liquit

Engage

- Events
- Announcements
- Knowledge Base
- Microsoft Teams
- RSS
- Birthdays
- Viva Engage
- Managed Signature
- Microsoft To-Do
- SharePoint
- Address Book
- YouTube

Unify

- AFAS Online
- Zenya DOC
- Vilans Kick
- ConnectWise
- Zaaksysteem
- AutoTask
- Zermelo
- TOPdesk
- Nedap ONS
- Magister
- OpenIMS
- Egnyte

 **Workspace365**

Everything simplified.

Our Offices

Netherlands

+31 30 711 6725

Berencamperweg 6D, Nijkerk
3861 MC, Netherlands

United Kingdom

+ 44 161 768 6020

Office 339, Spaces, Peter House,
Oxford St, Manchester M1 5AN